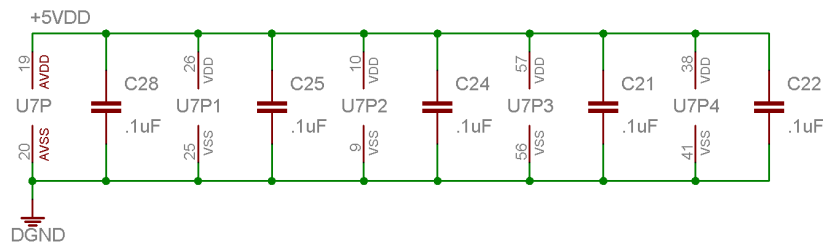
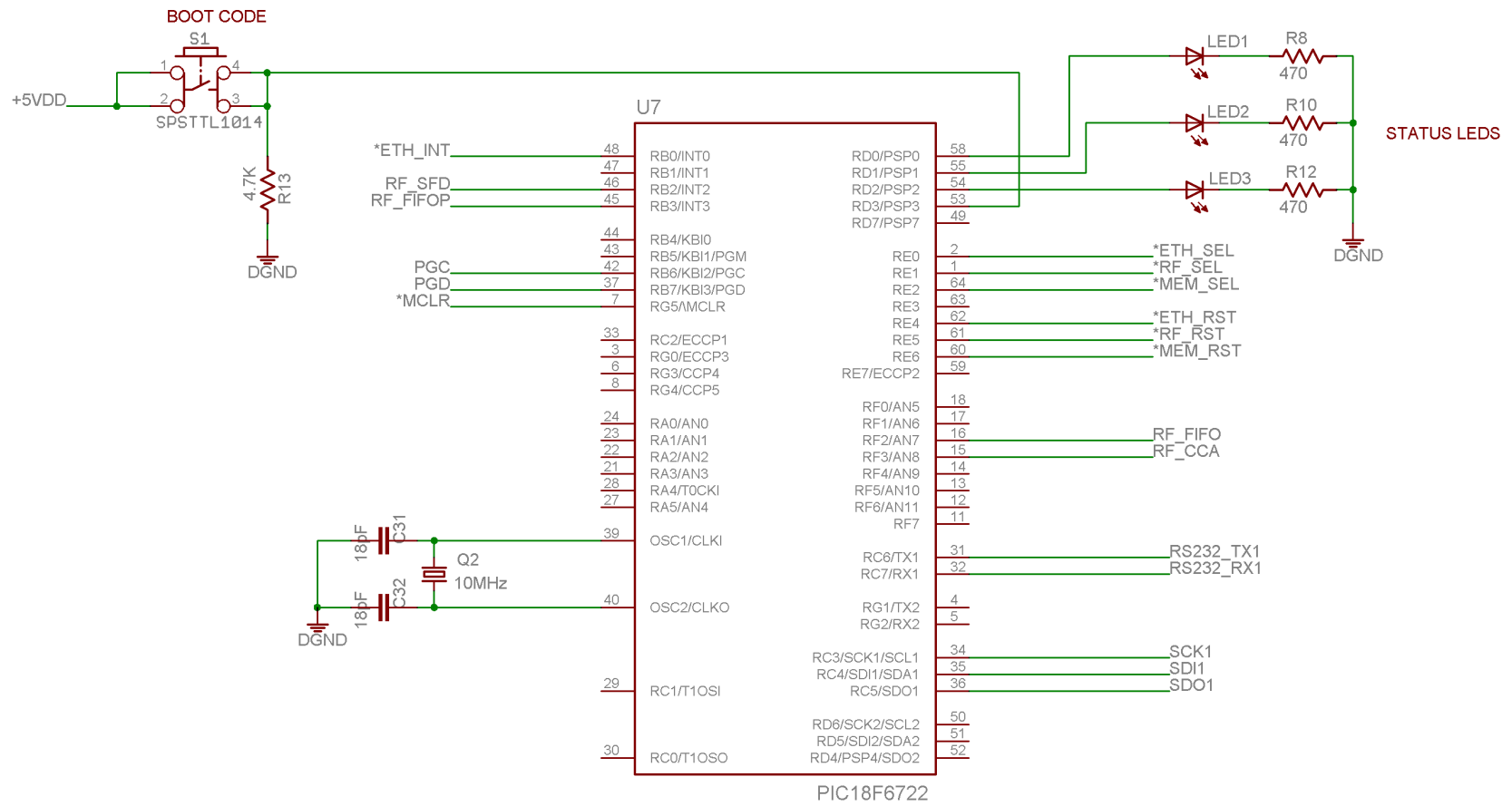


POWER SUPPLY, ICD-2 & RS-232

MicroAutomata Corporation		copyright 2006
TITLE: WPAN_GW1		REV:
Date: 12/13/2006 03:32:27p	Sheet: 1/3	



Microcontroller

MicroAutomata Corporation

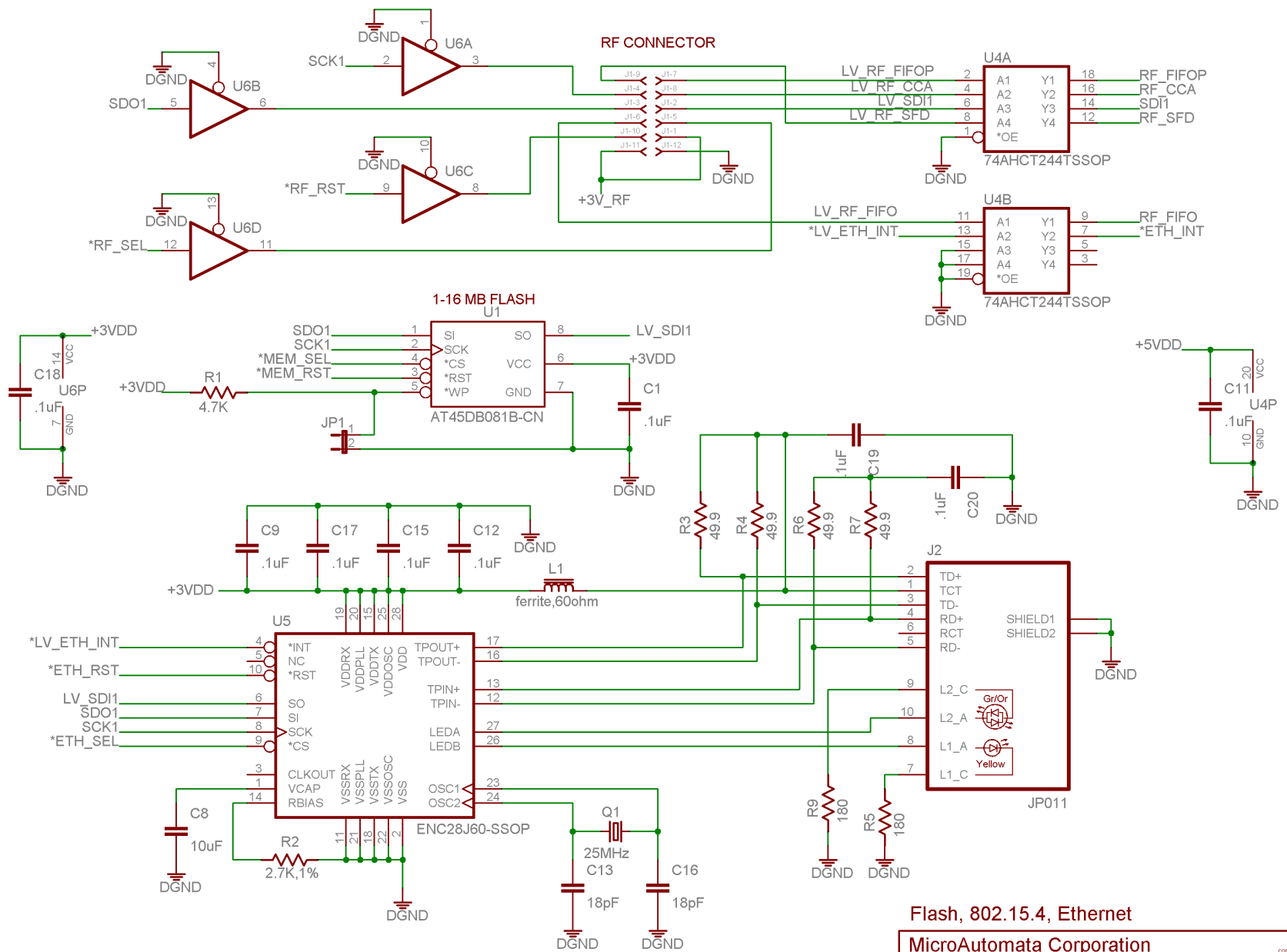
copyright 2006

TITLE: WPAN_GW1

REV:

Date: 12/13/2006 03:32:27p

Sheet: 2/3



Flash, 802.15.4, Ethernet

MicroAutomata Corporation

copyright 2006

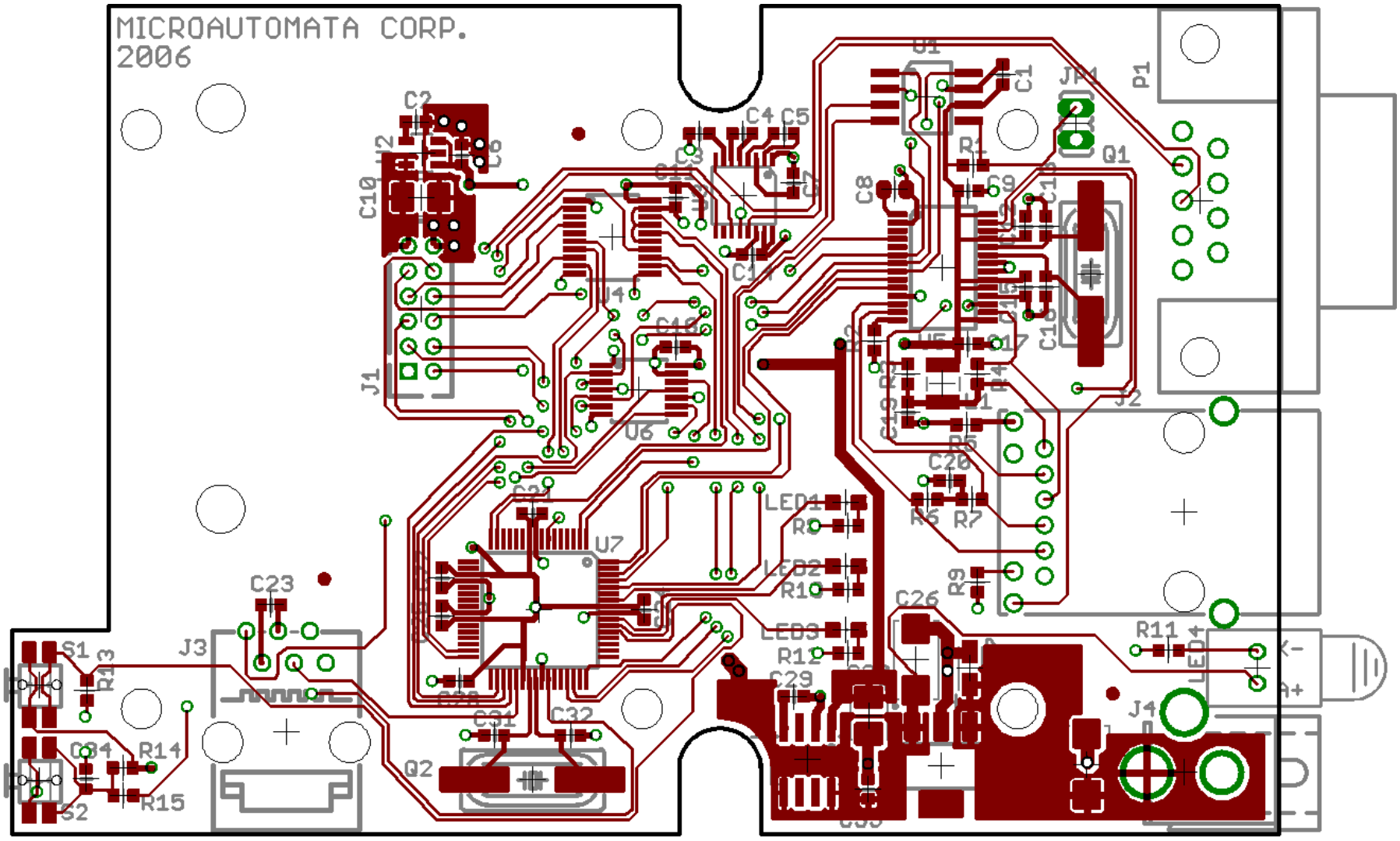
TITLE: WPAN_GW1

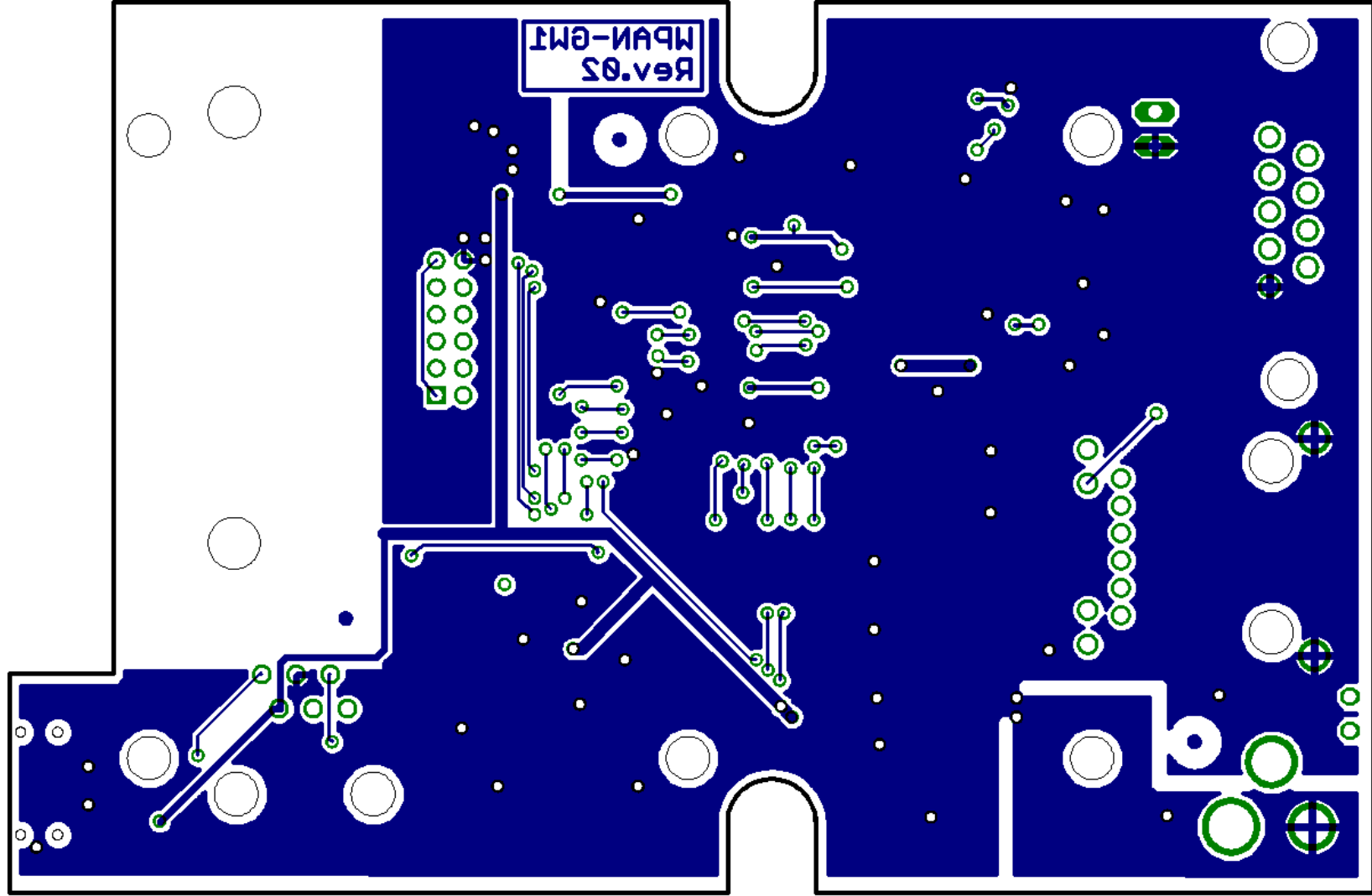
REV:

Date: 12/13/2006 03:32:27p

Sheet: 3/3

MICROAUTOMATA CORP.
2006





Partlist exported from WPAN_GW1.sch at 12/21/2006 08:24:23a

Qty	Value	Device	Parts
1		JP1E	JP1
20	.1uF	CAPACITOR_0603	C1, C5, C6, C9, C11, C12, C14, C15, C17, C18, C19, C20, C21, C22, C23, C24, C25, C28, C34, C35
3	.47uF	CAPACITOR_0603	C3, C4, C7
1	1uF	POLARISED_A_CASE	C27
1	2.7K,1%	RESISTOR_0603	R2
3	4.7K	RESISTOR_0603	R1, R13, R14
1	10MHz	CRYSTALHCM49	Q2
1	10uF	CAPACITOR_0805	C8
2	10uF	POLARISED_B_CASE	C10, C30
4	18pF	CAPACITOR_0603	C13, C16, C31, C32
1	25MHz	CRYSTALHCM49	Q1
2	47uF	POLARISED_C_CASE	C26, C33
4	49.9	RESISTOR_0603	R3, R4, R6, R7
1	74AHCT244TSSOP	74AHCT244TSSOP	U4
1	74LVTH125MTC	74LVTH125MTC	U6
2	180	RESISTOR_0603	R5, R9
1	182-009-213R-531	D-SUB9-H5M09RA	P1
5	470	RESISTOR_0603	R8, R10, R11, R12, R15
2	470pF	CAPACITOR_0603	C2, C29
1	4278-6218	4278-6218	J3
1	AT45DB081B-CN	AT45DB081B-CN	U1
1	CML-5300H7	CML-5300H7	LED4
1	ENC28J60-SSOP	ENC28J60-SSOP	U5
1	J-12-DF11-12DP-2DSA	J-12-DF11-12DP-2DSA	J1
1	JP011	JP011	J2
1	KLDX-202-A	KLDX-202-A	J4
3	LTST-C170AKT	LEDCHIPLED_0805	LED1, LED2, LED3
1	MAX3221PW	MAX3221PW	U3
1	MIC205-3.3BM5	MIC205-3.3BM5	U2
1	MIC5209LN-5.0BS	MIC5209LN-5.0BS	U9
1	PIC18F6722	PIC18F6722	U7
2	SPSTTL1014	SPSTTL1014	S1, S2
1	TC1107-3.3VOA	TC1107-3.3VOA	U8
1	ferrite,60ohm	INDUCTOR_1210	L1